

 **BASF**

We create chemistry



WALLTITE®

WALLTITE® Spray Foam Insulation & Air Barrier

**Better Buildings Today,
Better Planet Tomorrow**

WALLTITE® SPRAY FOAM INSULATIONS

For a Better Planet Tomorrow, We Help Build Better Buildings Today With Our Products.

We create chemistry for a sustainable future. BASF is proud to offer a comprehensive offering of closed-cell spray polyurethane foam (SPF) insulations with a lower environmental impact. Using blowing agents based on hydrofluoroolefins (HFOs) with lower global warming potential (GWP) compared to HFCs, these WALLTITE HFO products are the next generation of spray foam insulation.

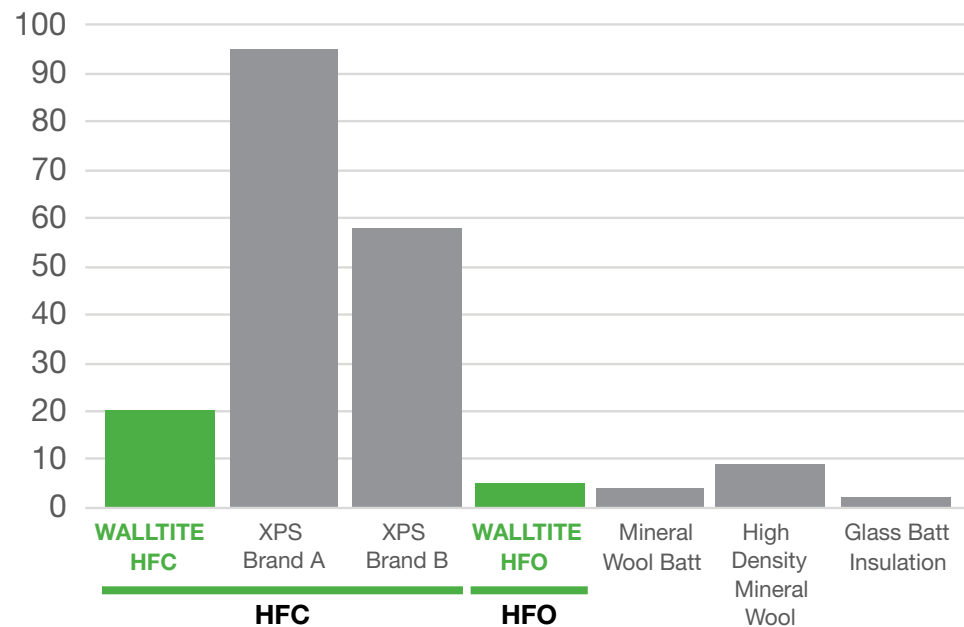
WHAT IS GLOBAL WARMING POTENTIAL?

Global Warming Potential

was developed to allow comparisons of the global warming impact of different gases. The larger the GWP, the more that a given gas warms the Earth compared to carbon dioxide (CO₂) over that time period.

WALLTITE HFO Series uses a low GWP (<1) HFO blowing agent. By changing to HFO chemistry, we are reducing the global warming impact of both the spray foam and the buildings in which it is used.

GWP [KG CO₂] OF DIFFERENT INSULATIONS



Note 1: GWP evaluated cradle to grave
Note 2: Values are based on data sourced from publicly available environmental product declarations (EPDs).

BENEFITS OF WALLTITE SPRAY FOAM INSULATIONS



Offers space efficiency with a high R-value/inch



Strongly adheres and conforms to typical construction substrates (rough and smooth surfaces)



Excellent air sealing ability due to expansion upon installation, creating an effective air and vapor barrier, and reducing condensation potential.



Delivers benefits of continuous insulation (where applicable)

BUILDING ENVELOPE APPLICATIONS

WALLTITE® can be used in a variety of commercial applications, including (but not limited to) the following:

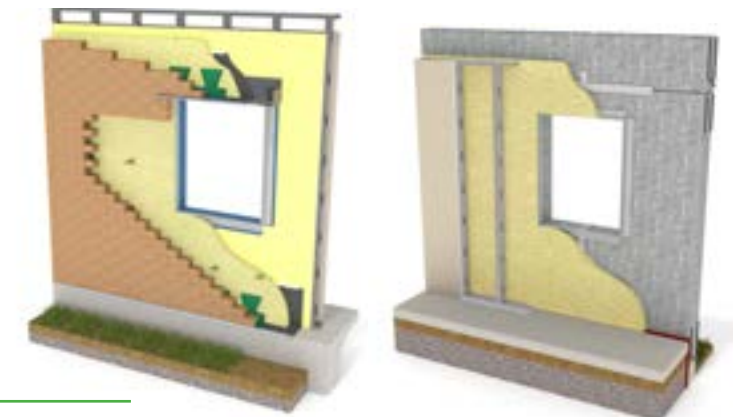


THERMAL PERFORMANCE OF WALLTITE HFO SERIES SPRAY FOAMS

THICKNESS inches	R-VALUE ft ² hr • °F / BTU
1	7.4
2	14
3	21
3.5	25
4	28
5	35
6	42
7	50
8	57
9	64

The WALLTITE HFO Series insulating air barriers provides a seamless, monolithic application for complete system continuity, superior effective insulation R-value and almost-zero air infiltration. Our closed-cell polyurethane technology allows design professionals and building owners to specify a material that is engineered to meet and exceed required performance criteria for every code and climate. In addition, WALLTITE performs as a weather resistant barrier, and due to this moisture resistance, these environmental factors have limited impact on long-term thermal performance.

These factors combine to increase building energy efficiency and durability, and significantly reduce operating cost, while improving occupant comfort, health and safety. The WALLTITE HFO Series insulating air barriers provide the design flexibility to address high-performance building envelope challenges in all types of construction, including those with unusual shapes and contours.



THE ALL-IN-ONE BUILDING ENVELOPE SOLUTION

Air Barrier, Weather Resistant Barrier – Drainage Plane, Vapor Retarder and High Performance Insulation, all in a single application.

UNDERSTANDING THE CERTIFICATIONS

Air Barrier Association of America (ABAA)

The ABAA provides third-party certification of air barrier materials and approved assemblies that provide complete air barrier system performance, as well as certification for contractors who are recognized for installation of air barrier applications.

GREENGUARD® Certifications

GREENGUARD and GREENGUARD Gold are third-party emission standards testing to help reduce the risk of indoor air pollution and the risk of chemical exposure. GREENGUARD Gold helps ensure products are acceptable for use in environments like schools and healthcare facilities.



We create chemistry

**For more information
contact BASF Corporation at:**

www.spf.basf.com

1-888-900-FOAM

WALLTITE® is a registered trademark of BASF Corporation. GREENGUARD® and GREENGUARD® Gold certifications are certified by UL Environment. ©2023 BASF Corporation

Data presented in this document is based on tests and information, which we believe to be reliable. This document is provided for information purposes only and without any representation, warranty or condition, expressed or implied, regarding its accuracy or completeness. Whether or not this data is used or relied upon is within the sole discretion and judgement of user. Since BASF Corporation has no control over the conditions of handling, storage, use and disposal of the products, BASF Corporation does not assume any responsibility or liability and expressly disclaims all liability for any claim, loss, damage, injury or expense resulting therefrom.

BR-CCF-500-WT-HFOCommercial

